



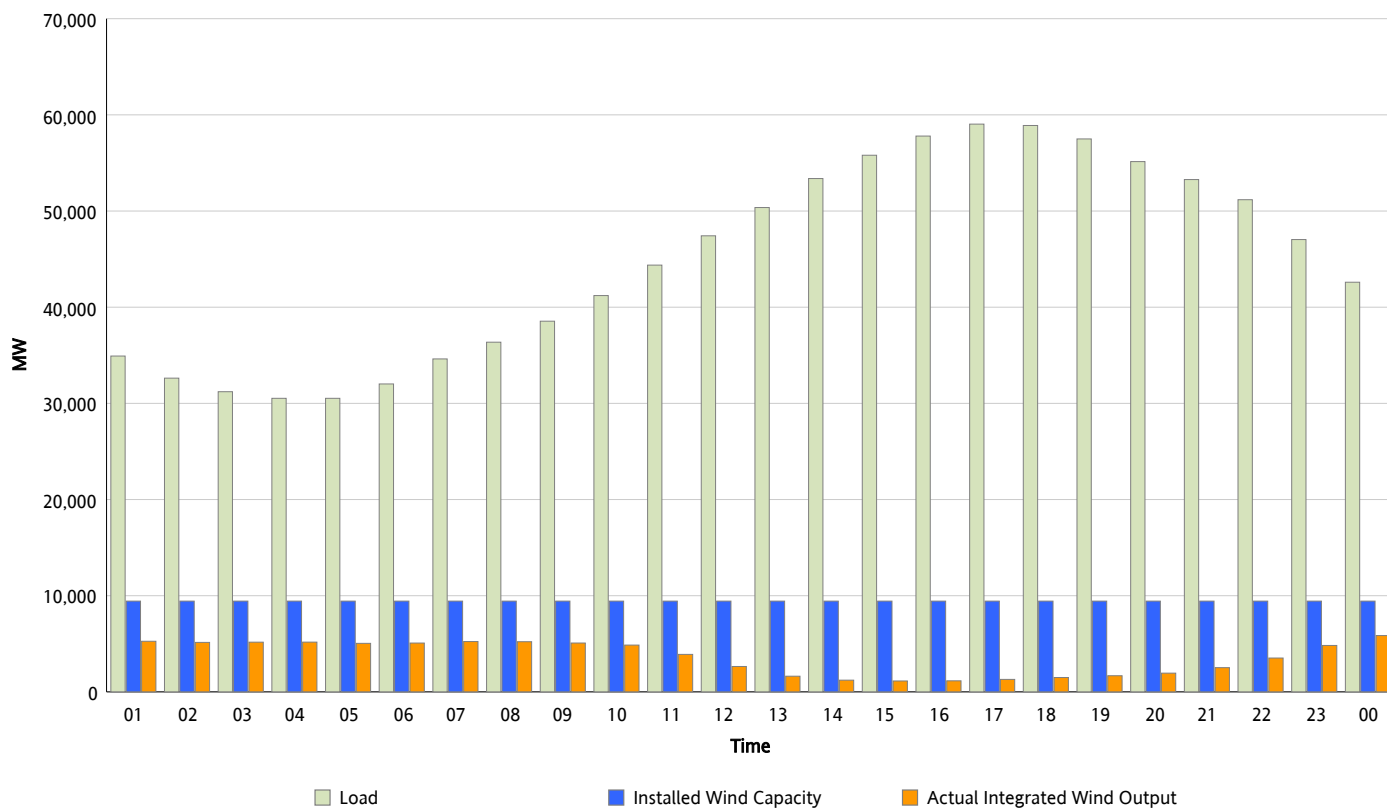
## ERCOT Grid Operations

### Wind Integration Report : 05/29/2012

Peak Load	59,037 MW
Load Peak Hour (HE)	17
Wind Over Peak	1,296 MW
Wind Record 04/13/12	7,925 MW
Max Wind Value*	6,102 MW
Wind Peak Time	00:00
Wind Integration %	15.02 %

#### Hourly Average Actual Load vs. Actual Wind Output

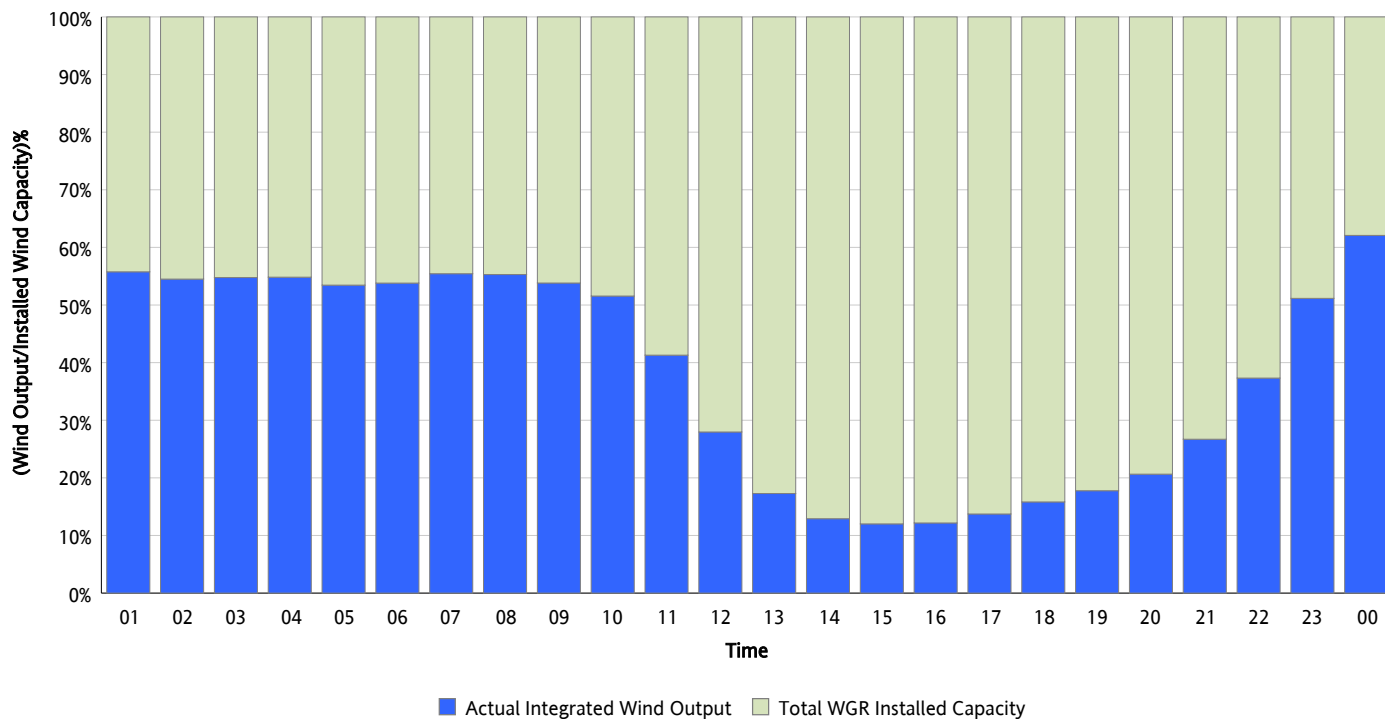
05/29/2012



\* Wind Record and Wind Max represent instantaneous values and the rest of the values are integrated over the hour

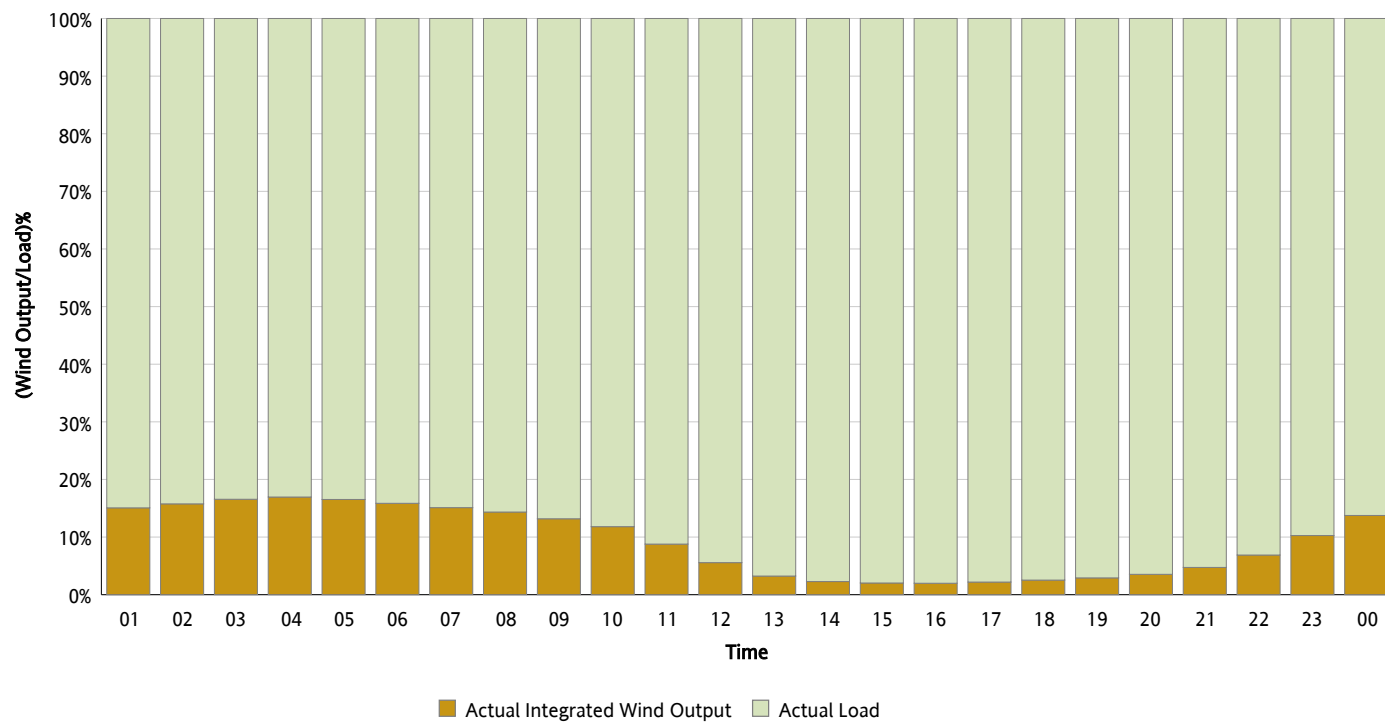
## Actual Wind Output as a Percentage of the Total Installed Wind Capacity

05/29/2012



## Actual Wind Output as a Percentage of the ERCOT Load

05/29/2012



## ERCOT Load vs. Actual Wind Output

05/22/2012 - 05/29/2012

